

### SPECIFICATIONS

MODEL	FREQUENCY RANGE (GHz)	LOW LEVEL SENSITIVITY ( $\mu\text{V}/\mu\text{W}$ ) (Min)	FREQUENCY SENSITIVITY (dB)	DIRECTIVITY (dB Min)	VSWR (Max)	INSERTION LOSS (dB Max)	POWER RATING (Input)	CONNECTOR TYPE (Female)
120410S	4.0-12.4	40	$\pm 0.4$	15	1.35	0.9	1W	SMA
120420S	4.0-12.4	4	$\pm 0.4$	15	1.35	0.5	10W	
120710S	7.0-12.4	40	$\pm 0.4$	15	1.35	0.9	1W	
120720S	7.0-12.4	4	$\pm 0.4$	15	1.35	0.5	10W	
181210S	12.4-18.0	40	$\pm 0.4$	15	1.35	1.0	1W	
181220S	12.4-18.0	4	$\pm 0.4$	15	1.35	0.6	10W	
262210S	18.0-26.5	40	$\pm 0.4$	14	1.40	1.3	1W	3.5 mm
262220S	18.0-26.5	4	$\pm 0.4$	12	1.70	1.7	10W	
184010S	18.0-40.0	40	$\pm 0.5$	12	1.70	1.3	1W	2.92 mm or 2.4 mm
184020S	18.0-40.0	4	$\pm 0.5$	12	1.70	1.3	10W	
264010S	26.5-40.0	40	$\pm 0.5$	12	1.70	1.7	1W	
264020S	26.5-40.0	4	$\pm 0.5$	12	1.70	1.3	10W	

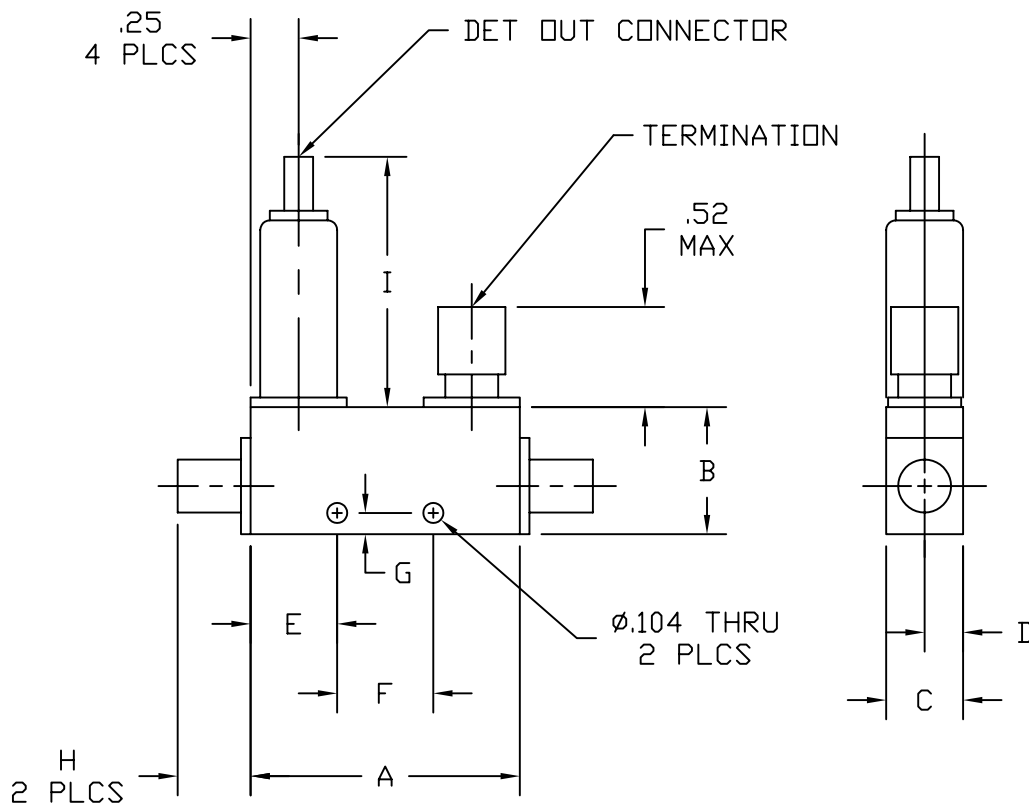
**OPERATING TEMPERATURE**

-54° to +85° C

**WEIGHT**

1.2 (OZ.)

MODEL	A	B	C	D	E	F	G
120410S	1.40	.66	.40	.20	.45	.500	.11
120420S	1.40	.66	.40	.20	.45	.500	.11
120710S	1.40	.66	.40	.20	.45	.500	.11
120720S	1.40	.66	.40	.20	.45	.500	.11
181210S	1.40	.66	.40	.20	.45	.500	.11
181220S	1.40	.66	.40	.20	.45	.500	.11
262210S	1.12	.64	.53	.26	.56	0	.09
262220S	1.12	.64	.53	.26	.56	0	.09
184010S	1.12	.62	.40	.20	.56	0	.09
184020S	1.12	.62	.40	.20	.56	0	.09
264010S	1.12	.62	.40	.20	.56	0	.09
264020S	1.12	.62	.40	.20	.56	0	.09



CONNECTOR TYPE	H
SMA MALE	0.50
SMA FEMALE	0.38
3.5 mm MALE	0.46
3.5 mm FEMALE	0.48
2.92 mm MALE	0.50
2.92 mm FEMALE	0.38
2.4 mm MALE	0.50
2.4 mm FEMALE	0.38

DETECTOR OUT CONNECTOR TYPE	I (MAX)
SMA FEMALE	1.40
BNC FEMALE	1.70
SMC JACK	1.30