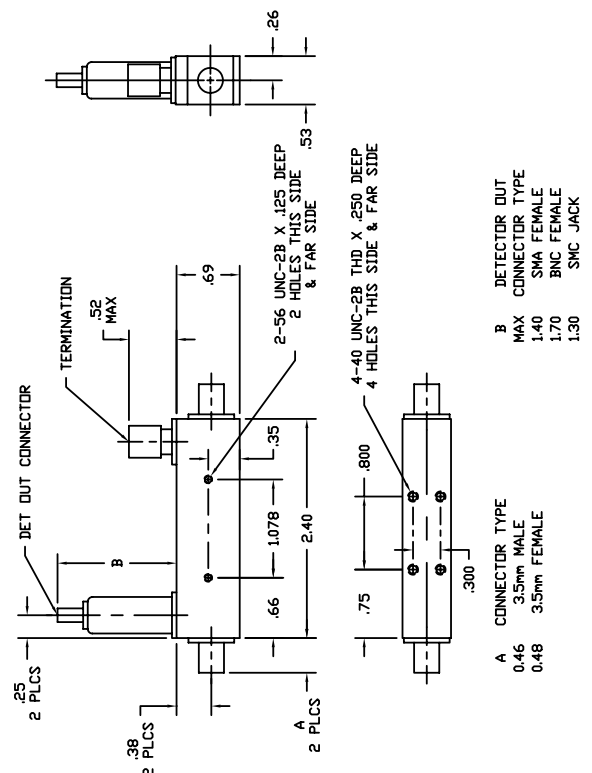


1.7-26.5 GHz DIRECTIONAL DETECTORS

SPECIFICATIONS

FREQUENCY RANGE		1.7-26.5 GHz
FREQUENCY SENSITIVITY (with respect to output)		± 0.7 dB, 1.7-18 GHz ± 1.2 dB, 1.7-26.5 GHz
DIRECTIVITY		> 16 dB, 1.7-18 GHz > 14 dB, 18-26.5 GHz
MAXIMUM VSWR (any port)		1.35, 1.7-18 GHz 1.45, 18-26.5 GHz
INSERTION LOSS	2611S 2616S	< 1.5 dB < 1.2 dB
LOW LEVEL SENSITIVITY	2611S 2616S	> 40 µV/µW > 10 µV/µW
DETECTOR OUTPUT POLARITY		Negative
POWER RATING (input)	2611S 2616S	1 W 4 W
STANDARD CONNECTORS		
RF		3.5mm Female
Optional:		3.5mm Male
DET OUT		SMA Female, BNC Female, or SMC Jack
WEIGHT (ounces)		2.6
OPERATING TEMPERATURE		-54° to +85° C

DIMENSIONS


A	CONNECTOR TYPE	
0.46	3.5mm MALE	
0.48	3.5mm FEMALE	
B	DETECTOR OUT CONNECTOR TYPE	
MAX	SMA FEMALE	1.40
	BNC FEMALE	1.70
	SMC JACK	1.30