



MODELS 1815S, 1822S 1818S & 1824S

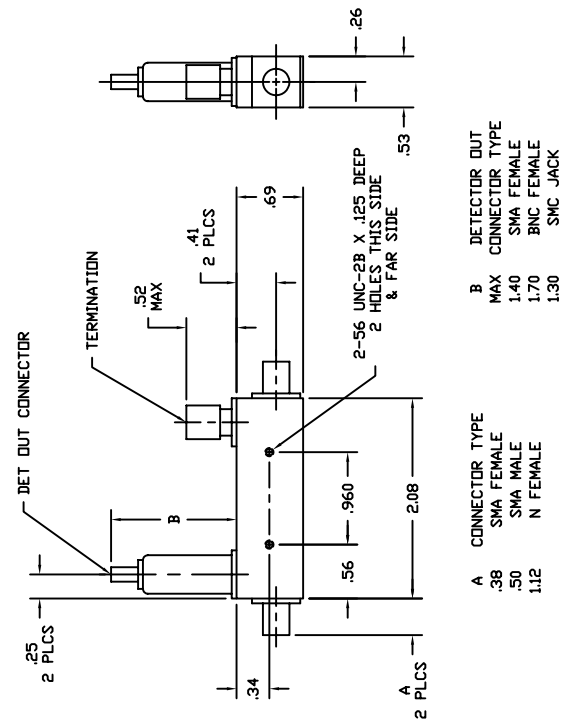
2-18 GHz DIRECTIONAL DETECTORS



SPECIFICATIONS

FREQUENCY RANGE		2-18 GHz
FREQUENCY SENSITIVITY (with respect to output)		± 0.7 dB
DIRECTIVITY		> 16 dB
MAXIMUM VSWR (any port)		1.30
INSERTION LOSS	1815S	< 1.90 dB
	1822S	< 1.10 dB
	1818S	< 0.75 dB
	1824S	< 0.70 dB
LOW LEVEL SENSITIVITY	1815S	> 100 $\mu\text{V}/\mu\text{W}$
	1822S	> 40 $\mu\text{V}/\mu\text{W}$
	1818S	> 10 $\mu\text{V}/\mu\text{W}$
	1824S	> 4 $\mu\text{V}/\mu\text{W}$
DETECTOR POLARITY		Negative
POWER RATING	1815S	0.8 W
	1822S	1 W
	1818S	4 W
	1824S	10 W
STANDARD CONNECTORS		
RF		SMA Female
Optional:		SMA Male or N Female
DET OUT		SMA Female, BNC Female, or SMC Jack
WEIGHT (ounces)		
N Female RF Connectors		4.3
SMA Female RF Connectors		2.4
OPERATING TEMPERATURE		-54° to +85° C

DIMENSIONS



1288 Anvilwood Ave. • Sunnyvale, CA 94089 • (408) 734-5999 • FAX: (408) 734-3017
Toll Free 1 (877) 734-5999 • www.krytar.com