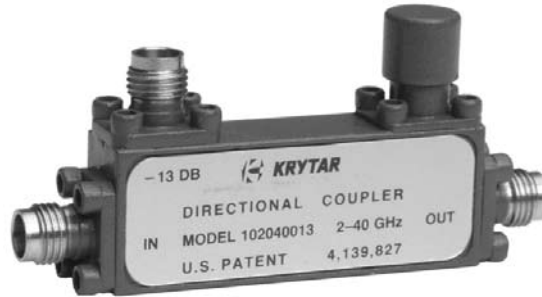




MODELS 102040013, 102040013K 102040016 & 102040016K

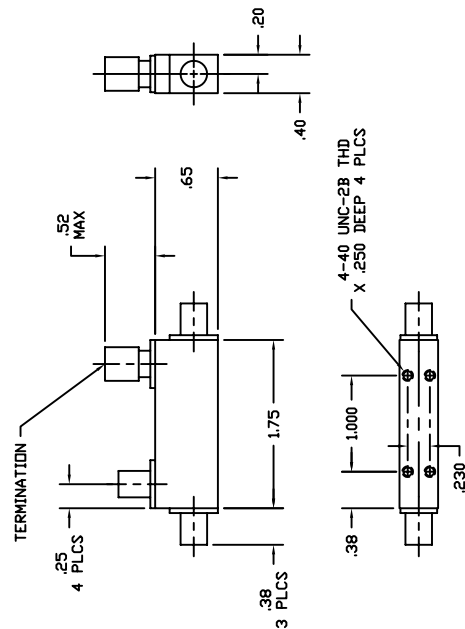
2-40 GHz DIRECTIONAL COUPLERS



SPECIFICATIONS

FREQUENCY RANGE	2-40 GHz
COUPLING (with respect to output)	
Nominal 102040013 & 102040013K	13 ± 1 dB
102040016 & 102040016K	16 ± 1 dB
Frequency Sensitivity	± 0.4 dB, 2-20 GHz ± 0.7 dB, 2-40 GHz
DIRECTIVITY	> 15 dB, 2-20 GHz > 11 dB, 20-40 GHz
MAXIMUM VSWR (any port)	1.5, 2-20 GHz 1.7, 20-40 GHz
INSERTION LOSS (includes coupled power)	
102040013 & 102040013K	< 1.0 dB, 2-20 GHz < 1.7 dB, 20-40 GHz
102040016 & 102040016K	< 0.9 dB, 2-20 GHz < 1.6 dB, 20-40 GHz
POWER RATING (input)	
Average	20 W
Peak	3 KW
STANDARD CONNECTORS	
102040013 & 102040016	2.4 mm Female
102040013K & 102040016K	2.92 mm Female
WEIGHT (ounces)	1.2
OPERATING TEMPERATURE	-54° to +85° C

DIMENSIONS



1288 Anvilwood Ave. • Sunnyvale, CA 94089 • (408) 734-5999 • FAX: (408) 734-3017
Toll Free 1 (877) 734-5999 • www.krytar.com